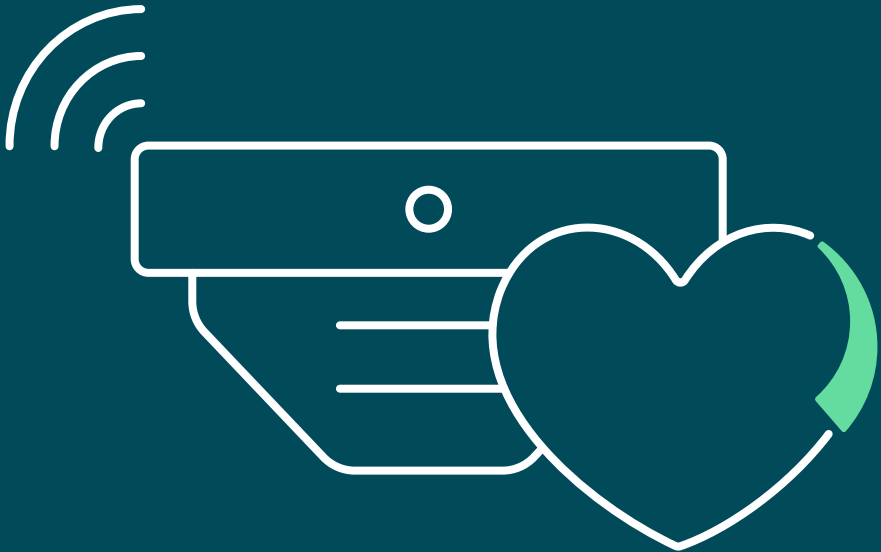


# Be even safer thanks to the remote inspection-enabled smoke alarm **K PROTECT R**

Your wellbeing is our primary concern



# Welcome to an even safer world

Today, we assembled a remote inspection-enabled **K PROTECT R** smoke alarm in your place of residence. This makes your home that bit safer and ensures your landlord fulfils the legal requirements.

In this flyer, we want to acquaint you with the fundamental functional principles of this smoke alarm and answer many questions you might have about it in

advance. Please retain this information in a safe place so you can read again about its functions at any later time.



At [www.kalo.de/rwm-bewohner](http://www.kalo.de/rwm-bewohner) we also provide this info brochure as a PDF file.

## The features of your new smoke alarm



### Reliable warning in case of smoke

The **K PROTECT R** gives you an unmissable acoustic warning if there is smoke in your house. This is particularly important when you are asleep, as your sense of smell is limited at such times. Every month, around 30 people die in fires in Germany – often because of smoke inhalation.



### Comfortable remote inspection by radio

The **K PROTECT R** is a smoke alarm whose regular inspection is carried out via radio, meaning we no longer need to enter your apartment in your presence.



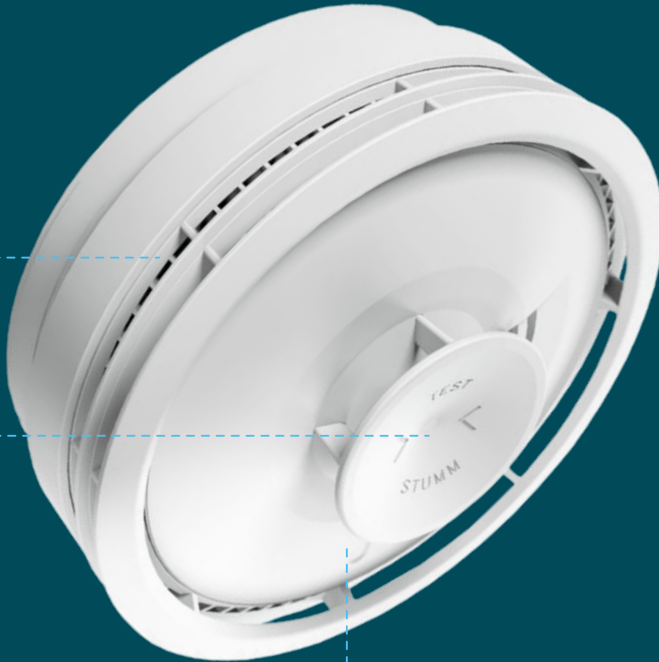
### Unobtrusive operation

In standard operation there are no visible or audible signs that could disturb you. The **K PROTECT R** is thus particularly suitable for use in bedrooms and children's rooms. Only during the automatic inspection of the safety environment, carried out every 16<sup>th</sup> of the month between 3:00 and 5:00 p.m., can a slight clicking be heard.

# Your new smoke alarm

## Smoke inlets

These openings are where smoke enters the smoke chamber in case of fire. For this reason, no objects may be positioned within a 50 cm radius of them, as they could prevent the ingress of smoke into the alarm. Exceptions to this are objects already in place during installation such as lamps or walls.



## Functional display

The smoke alarm display only flashes in case of an alarm, if there is a malfunction or the smoke inlets are blocked. In standard operation there is no signal.

## Large function button

The function button in the middle of the device can be pressed easily using a broom handle, walking stick or similar to test the alarm or turn it off if it has gone off erroneously.

# Correctly determining signals and warning tones

## Mode

---

### Normal operation

In normal operation, there are no visible or audible signals.

---

### Functional test

A signal is emitted for the duration that the test button is pressed.

---

### Alarm

A signal is sent until no more smoke is present in the smoke chamber. Alternatively, the alarm can be muted for 10 minutes by pressing the test button.

The red LED will continue to flash.

---

### Obstruction within 50 cm radius of the alarm

The alarm has discovered an obstruction in a 50 cm radius. If the obstruction cannot be removed you can switch off the LED signal by pressing the test button.

---

### Alarm completely covered

The alarm is completely covered. Remove whatever is covering it to restore functionality.

---

### Sensor error

The alarm is defective, the device must be replaced. Report to the KALO hotline for this. By pressing the test button you can mute the acoustic signal for 12 hours.

---

### Battery empty

The battery voltage is low; the device must be replaced. Report to the KALO hotline for this. By pressing the test button you can mute the acoustic signal for 12 hours.

---

### Sound generator error

The alarm is defective, the device must be replaced. Report to the KALO hotline for this.

---

LED		Warning sound
-----	--	---------------

		
1x flash	+	Rising to full volume

		
1x flash	+	Alarm sound

		
5x flash		

		
5x flash	+	5 warning tones

		
2x flash	+	2 warning tones

		
1x flash	+	1 warning tone

		
2x flash		

### Information on remote maintenance

In an emergency, smoke alarms can only reliably trigger an alarm if they are working flawlessly. That is why we remotely test the function of the device once a year. This includes its energy supply, warning signal, environmental checks, assembly status, correct functioning of the smoke sensor and condition of the smoke inlets.

If you yourself discover a fault in the device and cannot eliminate it yourself, please contact our free KALO hotline for smoke alarms.

**0800 – 000 87 18**

**KALO hotline for smoke alarms**

We are there for you at any time, seven days a week. Please get in touch so that we can restore the device to full functionality as soon as possible. This is for your own safety!

# General information on remote inspection via radio

## Data security and protection of your private sphere

The **K PROTECT R** regularly checks its own functionality on its own. No large objects may permanently block the smoke inlets and the safety radius of 50 cm must always be upheld. The ultrasound distance sensor installed does not provide any information on the properties of the objects it senses in the environment. It only checks whether any larger objects are within the safety radius at the time of inspection. There are no cameras or microphones in the device.

The inspection data are encrypted, sent in full conformity with data protection to the KALO headquarters in Hamburg, and remain in Germany. Here, no instantaneous data is transferred, only a retrospective status. The data transferred also contain no information on the occupants or the apartment. The assignment of data sets only takes place in the KALO database. The strictest data protection standards under the General Data Protection Regulation (GDPR) apply to the processing of the data.

## Safety characteristics of the K PROTECT R

- ☑ Tested to EN 14604 (KRIWAN Certificate No.1772-FIRWM-181135)
- ☑ Use as per DIN 14676-1 – Design C / Inspection Process C and DIN SPEC 91388
- ☑ Extended testing to vfdb 14-01/Q-Label
- ☑ Battery life of at least 10 years
- ☑ Crescendoing test volume
- ☑ Soiling compensation – i.e. automatic adjustment of sensitivity in case of a soiled smoke chamber

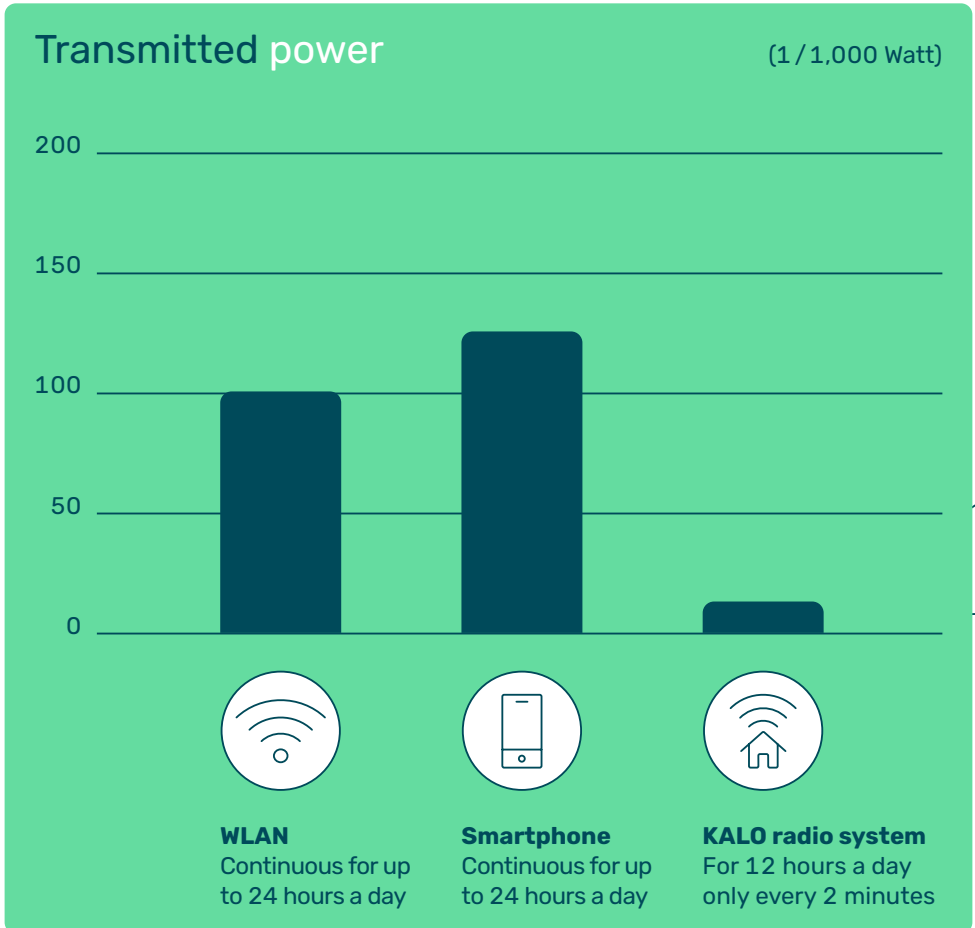
# Electromagnetic compatibility of the K PROTECT R

The **K PROTECT R** is non-critical in terms of electromagnetic compatibility.

The transmitted power of the radio system is 12.5 milliwatt, thus much less than the power of WLAN routers or modern smartphones. While routers and smartphones work round the clock, the K PROTECT R only sends a short signal

every 2 minutes from 06:00 a.m. to 6:00 p.m. (CET) at low power.

This means the device is utterly harmless for people with pacemakers. The smoke alarm has an EU conformity declaration and may be used within the EU without limitation.



# The most important answers to your questions



## **What should I do with the smoke alarm when I am renovating?**

Your smoke alarm has been set up carefully by us in accordance with the binding application standard DIN 14676. Thus, you may not remove it from its original place of installation nor put it elsewhere.

Painting over, wallpapering over or covering the **K PROTECT R** will lead to faults and even the failure of the device. Therefore, when renovating, make sure to protect the smoke alarm so that neither dust nor paint can penetrate it. Once the work is completed, please return the smoke alarm to its original condition so it can continue to work reliably. Please then check the functionality of the device by pressing the test button.



## **What do I do in case of a false alarm?**

First make absolutely sure that there is no fire and the false alarm is genuinely an error. This could take place when large quantities of steam are produced by cooking or boiling water, if you smoke heavily or in some cases during renovation works. By gently pressing the function button you can reduce the sensitivity of the smoke alarm: this will usually interrupt the alarm. After ten minutes, the device

will return automatically to its normal operational status. Use this time to ventilate the room plentifully and eliminate the cause of the alarm. As soon as the potential cause has been eliminated by ventilation, the smoke alarm will return to normal operation.



## **What do I do with the smoke alarms if I carry out a conversion or change the usage of individual rooms?**

In your apartment, smoke alarms are installed in every room and the corridors. The exceptions are the kitchen and bathroom. In this way, you have the best possible protection and can change the room usage as you wish. Reinstallation or new assembly are not necessary.



For further answers to frequently asked questions, please go to:  
[www.kalo.de/  
rwm-bewohner-faq](http://www.kalo.de/rwm-bewohner-faq)



# We are happy to receive feedback

## We want to improve constantly

To make sure we are always able to adjust our products, services and informative materials to your needs, we would like to ask you to take a few minutes to answer a few questions for us.

We are particularly interested in the questions about smoke alarms that you still feel you would like answered after reading this brochure.

To make giving feedback as easily as possible, we have created a short online survey. Scanning the below QR code or entering a web address will take you directly to the page.



You can find the customer survey form here:

[www.kalo.de/  
rwm-umfrage](http://www.kalo.de/rwm-umfrage)

### IMPORTANT

Please note that you cannot report faults via our feedback survey.

Instead, make use of our free KALO hotline for smoke alarms.

**0800 – 000 87 18**

**KALO hotline for  
smoke alarms**

# What should I do in case of fire?

- ⌚ Keep calm!
- ⌚ If the smoke is thick, move along as close to floor level as you can.
- ⌚ Immediately leave the apartment together with all other occupants.
- ⌚ Caution! Never flee through a smoke-filled staircase: just a few breaths of smoke can cause unconsciousness and then death.
- ⌚ Do not use lifts.
- ⌚ Warn other residents.
- ⌚ Help older people, disabled people and ill residents without putting yourself in danger.
- ⌚ Keep the doors and windows of rooms where there is a fire closed to prevent the spread of fire and smoke.
- ⌚ Please note that the fire brigade is not directly alerted if your smoke alarms go off.

Alert the fire brigade  
at the telephone number:

**112**

- ⌚ Who are you?  
(Name, telephone number)
- ⌚ Where is the fire?  
(Address)
- ⌚ What has happened?  
(Extent of the fire)
- ⌚ What is the situation?  
(Injuries etc.)
- ⌚ Wait for instruction  
by the fire brigade.



KALO supports  
the initiative "smoke  
alarms save lives"


**[www.rauchmelder-  
lebensretter.de](http://www.rauchmelder-lebensretter.de)**



Einfach. Innovativ. Persönlich.  
[www.kalo.de](http://www.kalo.de)

KALORIMETA GmbH  
Heidenkampsweg 40  
20097 Hamburg  
[www.kalo.de](http://www.kalo.de)



 Printed on 100 % recycled paper

1293-08-2022 EN

Ein Unternehmen der  
**noventic** group